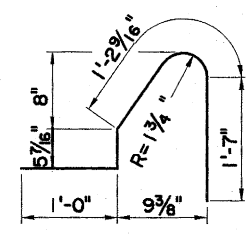


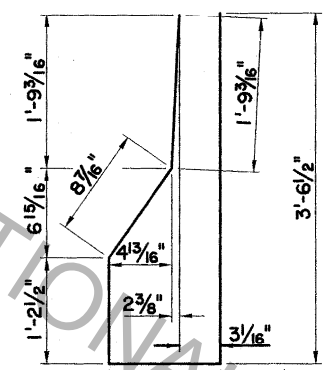
STANDARD BRIDGE BARRIER RAILING ELEVATION
(SHOWING BARRIER RAILING ALONG BRIDGE SLAB)

NOTES:

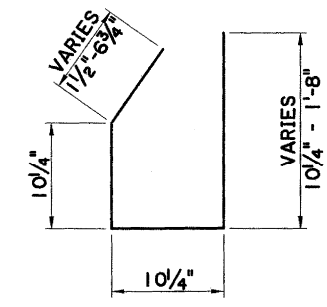
- 1) STANDARD DETAIL BR-05 CONCRETE BARRIER DETAILS SHALL BE USED ONLY WHEN THE STANDARD GUARD RAIL DETAILS CANNOT BE USED DUE TO SPECIAL SITE CONDITIONS.
- 2) ALL CONCRETE AND STEEL IN BARRIER RAILING AND BARRIER TRANSITION INCLUDING BARS THAT PROJECT FROM THE DECK INTO THE RAILING TO BE PAID FOR UNDER ITEM 810-01-00100 CONCRETE BRIDGE RAILING (STANDARD), PER LINEAR FOOT.
- 3) WHEN EPOXY COATED REBARS ARE REQUIRED IN THE CONCRETE DECK, LONGITUDINAL BARS AND STIRRUPS IN THE BARRIER RAIL FACE (ROADWAY SIDE) SHALL HAVE THE SAME PROTECTION.
- 4) ALL BARRIER RAIL SURFACES ARE TO RECEIVE A CLASS 3 SPECIAL SURFACE FINISH.
- 5) REBAR DIMENSIONS SHOWN FOR NO. 502, 503 & 504 BARS ARE BASED ON A 10" THICK APPROACH SLAB, ADJUSTMENTS TO REBAR DIMENSIONS MUST BE MADE FOR APPROACH SLAB OR CONCRETE PAVEMENTS WITH OTHER VALUES WITH APPROVAL FROM THE ENGINEER.
- 6) WWF SHALL CONFORM TO ASTM A496 AND 497. WWF LAP SPLICE TO BE 1'-0" MINIMUM.
- 7) AT THE CONTRACTORS OPTION, NO. 4 BARS AT 5" CENTERS MAY BE SUBSTITUTED IN LIEU OF NO. 501 BARS AT 8" CENTERS. USE 2" Ø PIN FOR BENDING. REINFORCING STEEL DIMENSIONS SHOWN FOR NO. 501 & 402 BARS ARE BASED ON 1'-1" CAST-IN-PLACE BRIDGE SLAB UNDER BARRIER; ADJUSTMENTS TO REBAR DIMENSIONS MUST BE MADE FOR DECKS WITH OTHER VALUES WITH APPROVAL FROM THE ENGINEER.
- 8) SAW CUTTING OF THE 1/2" OPEN JOINT IS PERMITTED PROVIDED 1 1/2" MINIMUM CLEARANCE IS MAINTAINED FOR REINFORCING STEEL AND SUBJECTED TO APPROVAL OF THE ENGINEER.



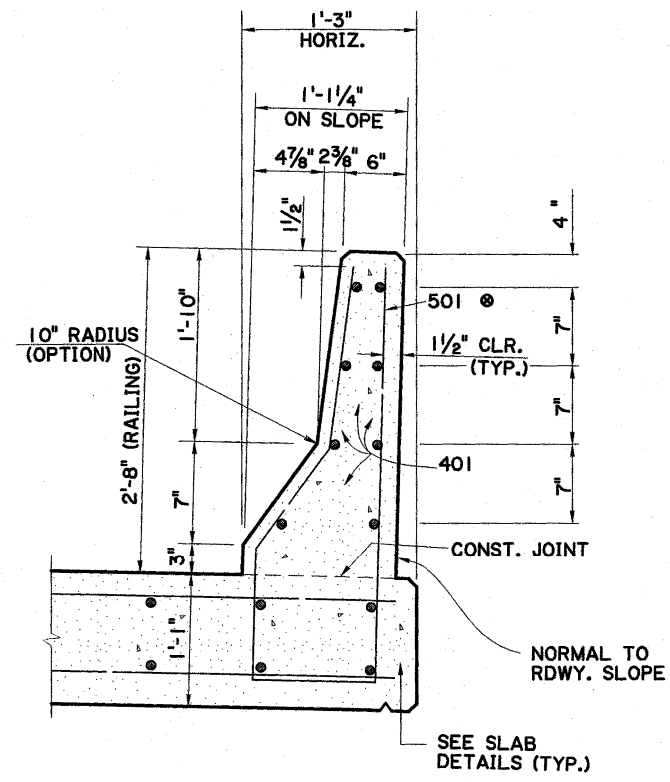
402
(2" Ø PIN)



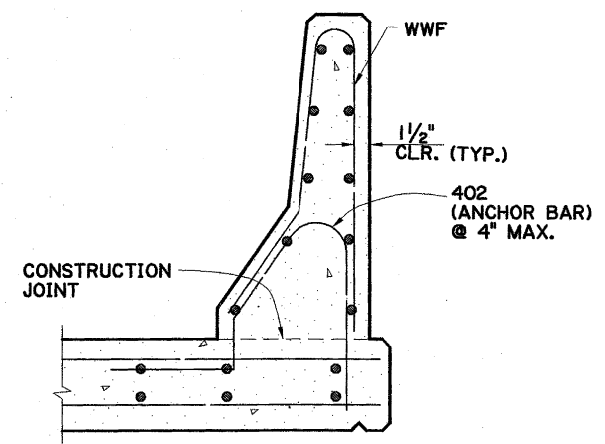
501 ⊕
(2 1/2" Ø PIN)



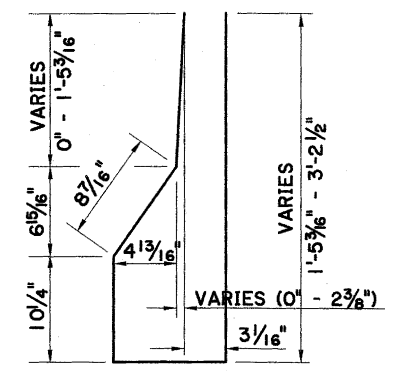
503 ⊕
(2 1/2" Ø PIN)



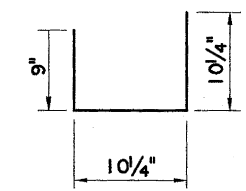
SECTION G-G



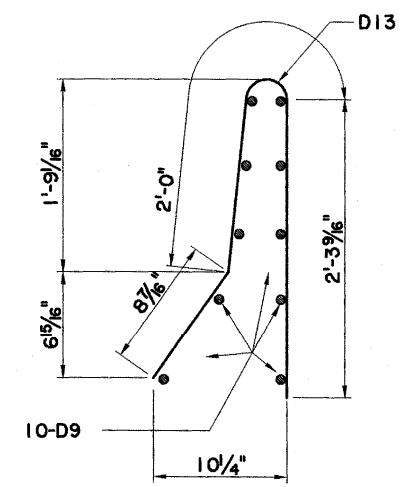
OPTIONAL BRIDGE RAIL SECTION



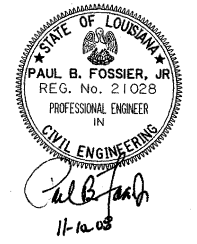
502 ⊕
(2 1/2" Ø PIN)



504 ⊕
(2 1/2" Ø PIN)



WWF DETAIL ⊕
(WWF VAR.x6 - D9xD13)
(2 1/2" Ø PIN)



DESIGNED	P. FOSSIER	PARISH	
CHECKED	G. GRASS	FEDERAL PROJECT	
DATE	OCT., 2008	STATE	
SHEET	2 OF 2	PROJECT	
NO.	07/18/16/2016 SPECIFICATIONS UPDATE	REVISION DESCRIPTION	
DATE		BY	
CONCRETE BARRIER RAILING & TRANSITION AT APPROACH SLAB (CAST-IN-PLACE)			
BRIDGE AND STRUCTURAL DESIGN			